

The Department of Chemistry at Binghamton University, State University of New York, offers programs of study leading to the doctor of philosophy (PhD) degree, as well as the master of science (MS) and the master of arts (MA) degrees. Specialization in the traditional areas of chemistry is available, along with interdisciplinary programs that interface chemistry with biology, materials science, energy research and environmental studies.

Location / Area

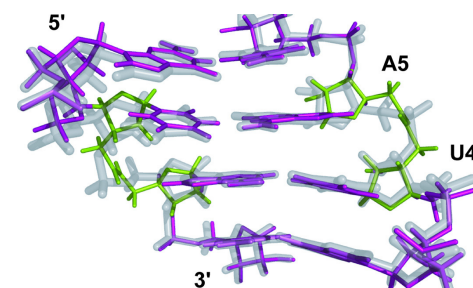
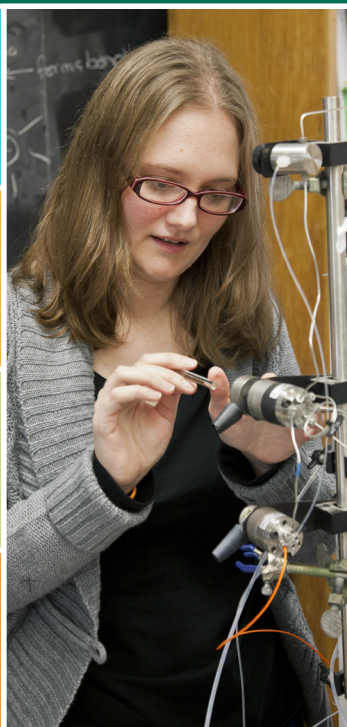
Our university is located in a suburb of Binghamton, a city at the confluence of two major rivers in the Southern Tier region of New York (near the beautiful Finger Lakes). There are about 250,000 people in the Greater Binghamton metro area. The cost of living and the crime rate are both low compared to large metro areas. The beautiful Binghamton campus is near a parkway, with many shops and stores conveniently nearby, yet is surrounded by serene natural areas. The city of Binghamton is within three hours (traveling by car) of Philadelphia and New York City.

How to Visit

You may take a virtual tour of our campus at binghamton.edu/grad-school/tour.html.

The Graduate School also offers prospective graduate students personalized campus visits (if you are already in the United States): binghamton.edu/grad-school/visit.

Graduate Studies in Chemistry



BINGHAMTON
UNIVERSITY
STATE UNIVERSITY OF NEW YORK

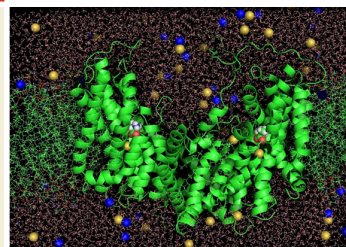
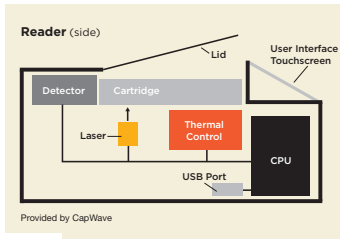
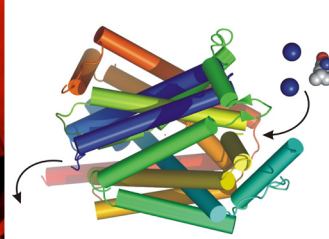
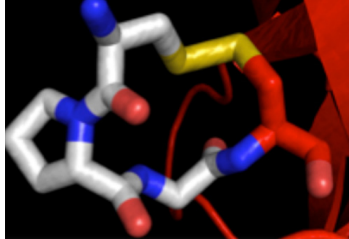
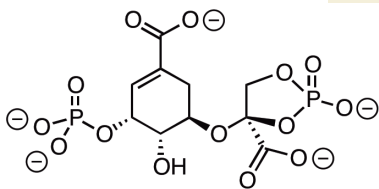
Harpur College
of Arts and Sciences

Research Programs

Our university is nationally recognized for its strong academic programs, distinguished faculty and talented students. The Chemistry Department has excellent research facilities (including state-of-the-art 600 MHz NMR and electron microscopes). Our faculty members conduct research in a variety of areas, including:

- Analytical Chemistry
- Biological Chemistry
- Bioorganic Chemistry
- Biophysical Chemistry
- Biosensors
- Electrochemistry
- Energy Research
- Environmental Chemistry
- Inorganic Chemistry
- Materials Chemistry
- Nanomaterials/Nanotechnology/Nanoscience
- Organic Chemistry
- Organometallic Chemistry
- Photochemistry
- Physical Chemistry

We provide individualized education and emphasize close contact between students and faculty. Our graduates obtain employment in industry, government, private businesses and academia.



Interdisciplinary Research Centers

Institute for Materials Research

materials.binghamton.edu

Center for Advanced Sensors and Environmental Systems (CASE)

binghamton.edu/case

Integrated Electronics Engineering Center (IEEC)

binghamton.edu/ieec

Small Scale Systems Integration and Packaging Center (S3IP)

binghamton.edu/s3ip

For More Information

Director of Graduate Admissions
Department of Chemistry
Binghamton University
PO Box 6000
Binghamton, NY 13902-6000

Web: binghamton.edu/chemistry

E-mail: chemgrad@binghamton.edu

How to Apply

Applications are considered for both spring and fall semesters. All assistantships and fellowships are awarded as part of the application approval process.

The following materials must be submitted:

- Graduate School application
- Official transcripts
- Two letters of recommendation
- Official Graduate Record Examination (GRE) test scores
- TOEFL score for all international students whose native language is not English
- Personal statement with interests

Applications are reviewed on a rolling basis (there is no deadline). Applicants for fall semester admission should apply during the months of January through April, while those applying for spring semester admission should apply during the months of September through November. You should submit your online application directly to the Graduate School at binghamton.edu/grad-school/apply.

You can find more information at our department website: chemistry.binghamton.edu (then go to Graduate Program > Admission Info).

Graduate School – Chemistry Program application overview is at binghamton.edu/grad-school/prospective-students/academic-programs/overviews/chemistry.html.

Financial Support

Competitive teaching and research stipends are offered to all PhD track graduate students in good academic standing. The majority of our PhD students receive full financial support for four years. Applicants accepted into the program will also be considered for federal and state financial support based on eligibility requirements. We do not (often) give financial support for students in the MS / MA programs. Our PhD track package is highly competitive: it includes an academic year stipend to the student, summer support, full tuition scholarship and medical coverage.

